

EMM
4/25/23
8088



TRUST LANDS ADMINISTRATION

SUPPORTING UTAH SCHOOLS AND INSTITUTIONS

Michelle E. McConkie
Executive Director

PO Box 215
Monticello, Utah 84535
Phone: 435-259-7417
trustlands.utah.gov

April 20, 2023

San Juan County
117 South Main St.
Monticello, UT 84535

Southeast Utah
Association of Local Governments
375 South Carbon Ave.
Price, UT 84501

Town of Bluff
PO Box 324
Bluff, UT 84512

Dear Community Leaders,

Subject: RDCC Notification #85360

Dear Commissioners and AOG,

The State of Utah School and Institutional Trust Lands Administration has received a lease application to lease approximately 28 acres of Trust Lands Administration property near Bluff in San Juan County. The Resource Development Coordination Committee (RDCC) requires that the Trust Lands Administration sends out a notification to affected governmental agencies. That information can be found on the RDCC website under project #85360 (please see the enclosed map of the project area).

Upon review of the information found on the RDCC website please provide comments to the Trust Lands Administration no later than 15 days from the date

of this letter. If you need further clarification or information, feel free to contact me at 435-259-7417.

Thank you for taking time from your busy schedules to review the enclosed information.

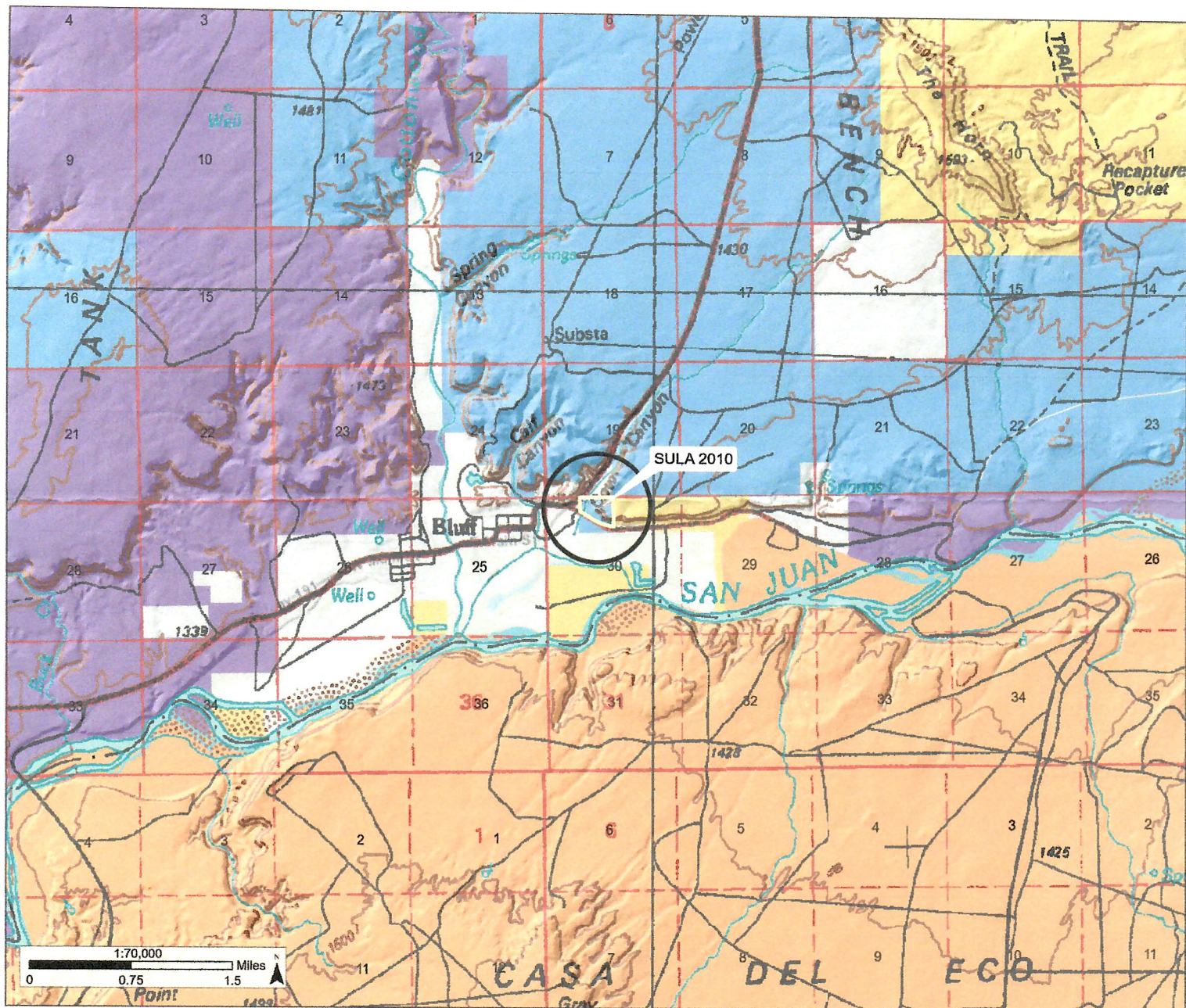
Yours sincerely,

Bryan W. Torgerson / TC

Bryan W. Torgerson

Southeast Area Manager- Surface





Special Use Lease Agreement No. 2010

Bluff Dwellings Resort Expansion

Within T40S R22E S30 SL
San Juan County

Special Use Lease Agreement
No. 2010 (28.00 Acres)

Land Ownership and Administration

Bureau of Land Management

National Monument
Private
State Trust Lands
Other State
Tribal Lands



Coordinate System: NAD 1983 UTM Zone 12N

March 16, 2023 SITLA

User: nicholaswilcox

Data represented on the map is for REFERENCE USE ONLY and is not suitable for legal, engineering, or surveying purposes. Users of this information should review or consult the primary data and information sources to ascertain the usability of the information. SITLA provides this data in good faith and shall in no event be liable for any incorrect results, or any special, indirect or consequential damages to any party, arising out of or in connection with the use or the inability to use the data herein.

Land parcels, lease boundaries and associated SITLA data layers may have been adjusted to allow for visual "best fit." The Surface Ownership Land Status data (if present) are maintained by SITLA to reflect current trust land status and surface ownership. Lakes, rivers, streams, highways, roads, county and state boundaries are distributed by the Utah Automated Geographic Reference Center and/or other sources as specified. Contour lines (if present) were generated from USGS 10 meter DEM.

Please Note: While SITLA seeks to verify data for accuracy and content, discrepancies may exist within the data. Acquiring the most updated SITLA ownership GIS data may require contacting the GIS staff directly 801-538-5100 or TLA-GIS@utah.gov. The SITLA GIS department welcomes your comments and concerns regarding the data and will attempt to resolve issues as they are brought to our attention. Color Aerial Photo (Google Imagery - 6 inch High Resolution).